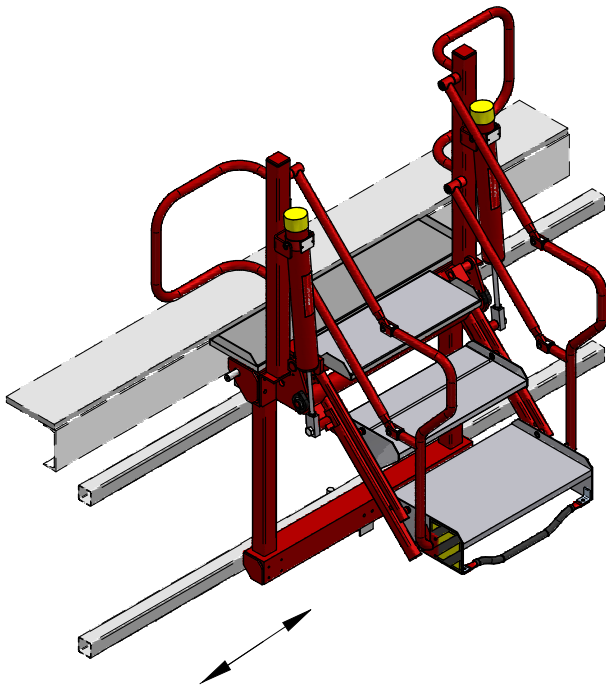


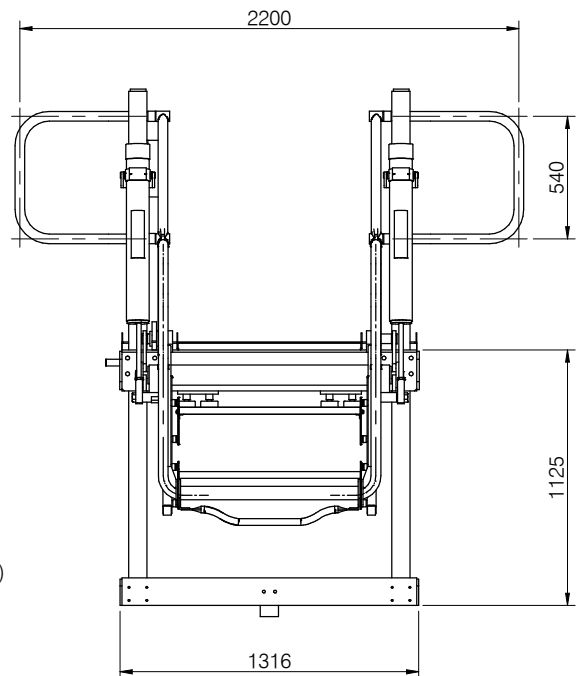
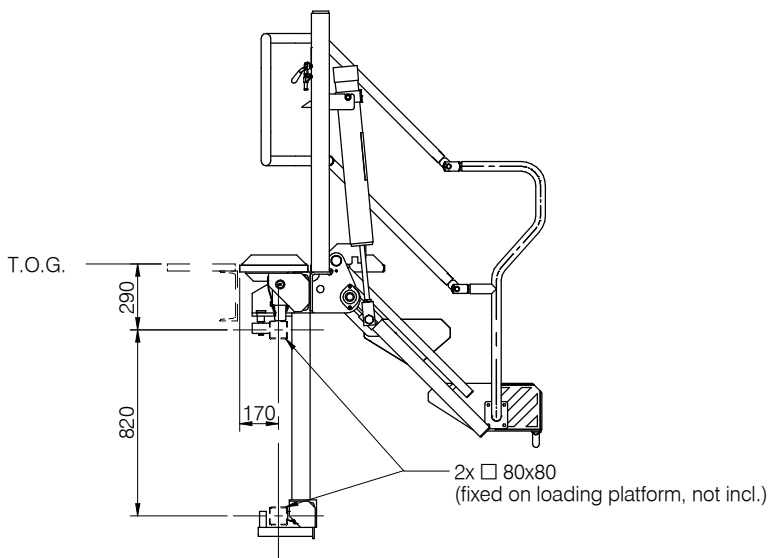
folding stairs

7.21 series, track mounted



STANDARD RANGE	OPTIONS
7.21.08 - 2 steps	chain-locking device
7.21.12 - 3 steps	pneumatically operation
7.21.16 - 4 steps	parking position detection
7.21.20 - 5 steps	add. safety railing equipment
7.21.24 - 6 steps	fully stainless steel execution
pull-up cord	
steps galvanised	safety cage std. dimensions;
construction coated/galvanised	1400x1400/2800x1400

TECHNICAL SPECIFICATIONS
for further technical details see DS.FS.01.E



subject to technical modifications