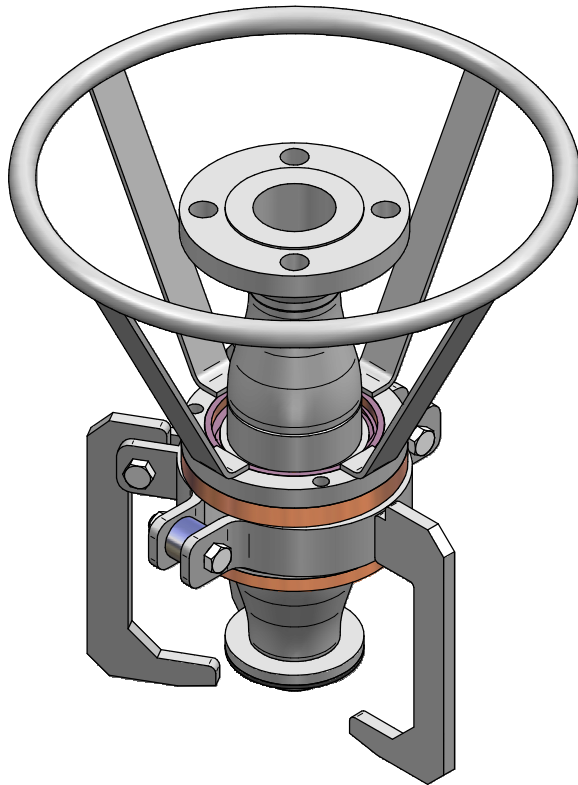


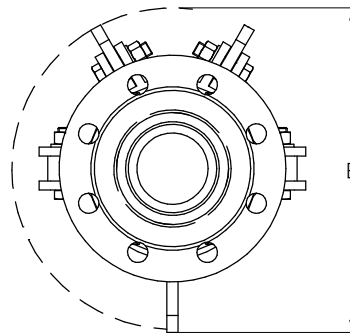
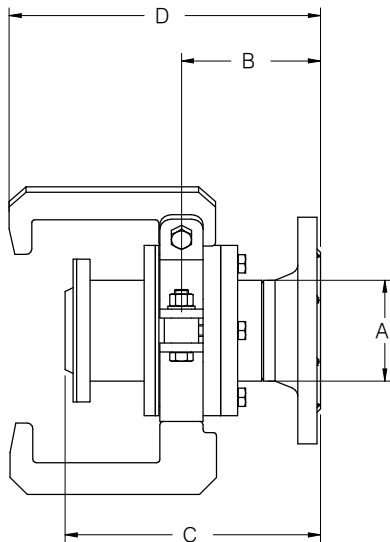
quick-connect / dis-connect koppeling

voorzien van handwiel



| ITEM | SPECIFICATIE |
|-------------|---|
| afmetingen | DN50 (2") tot DN150 (6") |
| materiaal | rvs, staal, aluminium |
| seals | PTFE, Viton, EPDM |
| bediening | handbediend |
| toepassing | ANSI: WNF, LJF, slip-on (150/300#) DIN: WNF, LJF, voorlas (PN10/16/40) |
| aansluiting | flens ANSI/DIN |

| PROCESGEGEVENS | WAARDEN |
|----------------|----------------|
| druk | tot 10 bar |
| temperatuur | -40°C / +100°C |



| MAAT | | AFMETINGEN | | | | | | | | GEWICHT |
|------|------|------------|------|-----|------|-----|------|-----|------|-------------|
| A | | B | | C | | D | | E | | incl. blind |
| mm | inch | mm | inch | mm | inch | mm | inch | mm | inch | kg |
| 50 | 2" | 128 | 5,0 | 200 | 7,9 | 230 | 9,1 | 205 | 8,1 | 20,0 |
| 80 | 3" | 123 | 4,8 | 225 | 8,9 | 275 | 10,8 | 286 | 11,3 | 25,0 |
| 100 | 4" | 130 | 5,1 | 225 | 8,9 | 275 | 10,8 | 380 | 15,0 | 41,7 |
| 150 | 6" | 146 | 5,8 | 239 | 9,4 | 371 | 14,6 | 483 | 19,0 | 75,3 |

technische modificaties voorbehouden