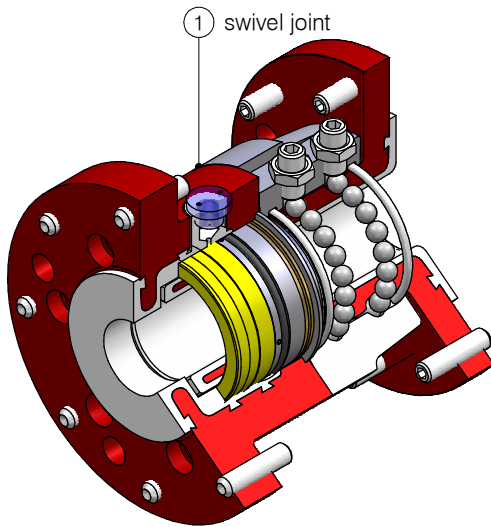


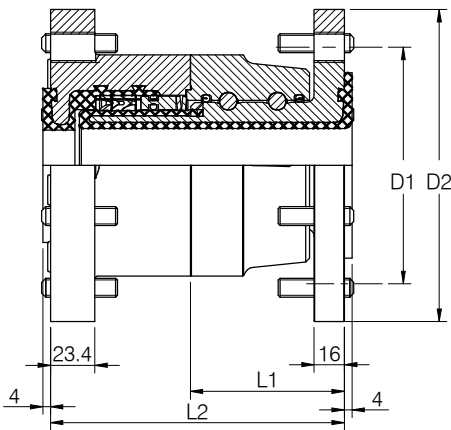
swivel joint

type 30-3620 - PFA lined

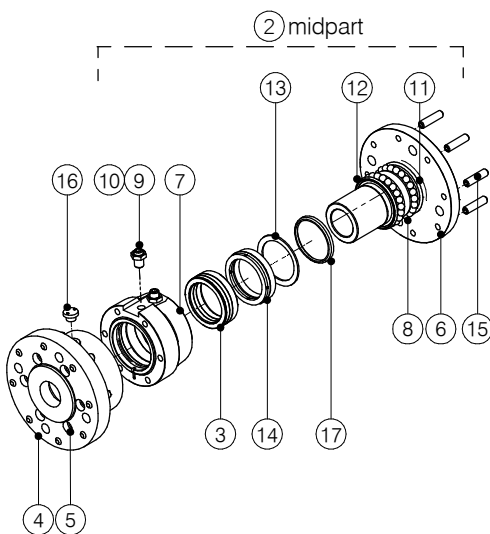


ITEM	SPECIFICATION
dimensions	DN50 (2"), DN80 (3"), DN100 (4")
swivel flange	carbon steel 42CrMo4 PFA lined
nipple	carbon steel 42CrMo4 PFA lined
coupler	carbon steel 42CrMo4 PFA lined
seals	PTFE
end connection	flanged DIN

PROCESS DATA	VALUES
pressure	up to 50 bar
temperature	-50°C / +200°C



SIZE	DIMENSIONS				WEIGHTS		
	D1	D2	L1	L2	swivel joint	midpart	
mm	inch	mm	mm	mm	mm	kg	kg
50	2"	125	165	81	155	11,5	6,7
80	3"	160	200	81	155	15,8	9,2
100	4"	180	220	81	155	18,8	11,5



ITEM	NAME	MATERIAL	ORDER NO.					
			qty	DN 50	qty	DN 80	qty	DN 100
3	product seal kit	PTFE	1	72925	1	72935	1	72945
4	swivel flange	steel	1	70572	1	70582	1	70592
4	swivel flange	st. steel	1	83612	1	76882	1	83622
5	bolts	steel	6	78165	8	78165	8	78165
6	nipple *	steel	1	70632	1	70642	1	70652
6	nipple *	st. steel	1	83632	1	76802	1	83642
7	coupler *	steel	1	22512	1	22612	1	22702
7	coupler *	st. steel	1	52102	1	52112	1	52122
8	ball	steel	44	43195	64	43195	78	43195
9	ball plug	steel	2	49675	2	49675	2	49675
10	nut	steel	2	47635	2	47635	2	47635
11	dust seal	PTFE	1	41945	1	41965	1	41985
12	chamber seal	PTFE	1	41945	1	41965	1	41985
13	cup spring	steel	3	49885	2	49895	2	49905
14	press. ring	steel	1	100632	1	100622	1	100292
15	dist. bolt	steel	16	78155	16	78155	16	78155
16	sight glass		1	82575	1	82575	1	82575
17	clamp ring	steel	1	100633	1	100623	1	100293

* only supplied as part of whole swivel excl. flange

subject to technical modifications