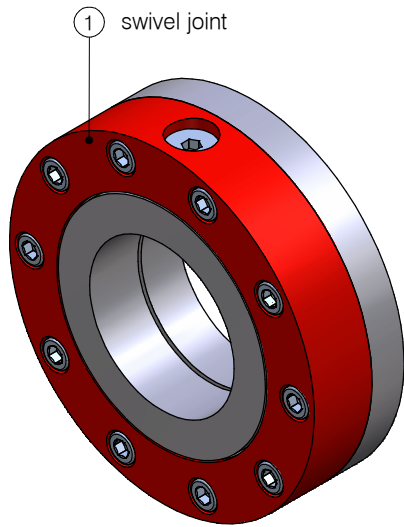


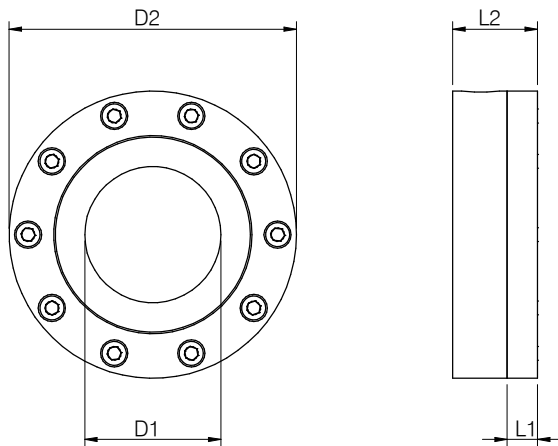
swivel joint

type 30-0470

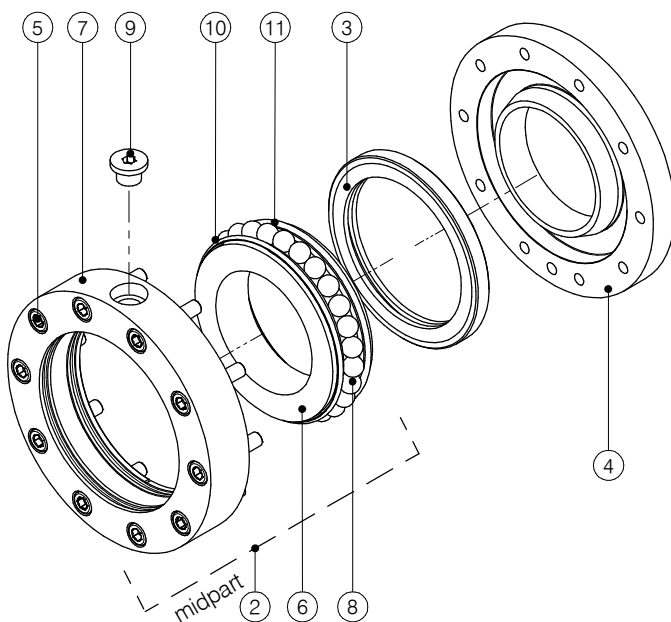


ITEM	SPECIFICATION
dimensions	DN80 (3"), DN100 (4")
swivel flange	stainless steel 1.4571
nipple	stainless steel 1.4571
coupler	steel 42CrMo4
seals	PTFE, Viton, EPDM
end connection	welded end

PROCESS DATA	VALUES
pressure	up to 50 bar
temperature	-50°C / +200°C



SIZE		DIMENSIONS				WEIGHTS	
		D1	D2	L1	L2	swivel joint	mid part
mm	inch	mm	mm	mm	mm	kg	kg
80	3"	90	190	20	56	8	5,5
100	4"	98	280	26	77	27	17



ITEM	NAME	QUANT.	
		80	100
2	midpart	1	1
3	product seal, PTFE	1	1
3	product seal, Viton	1	1
3	product seal, EPDM	1	1
4	swivel flange	1	1
5	bolt	10	12
6	nipple *	1	1
7	coupler *	1	1
8	ball	27	38
9	ballplug	1	1
10	dust seal, PTFE	1	1
10	dust seal, NBR	1	1
10	dust seal, FPM	1	1
11	chamber seal, PTFE	1	1
11	chamber seal, FPM	1	1

* only supplied as part of whole swivel excl. flange

subject to technical modifications