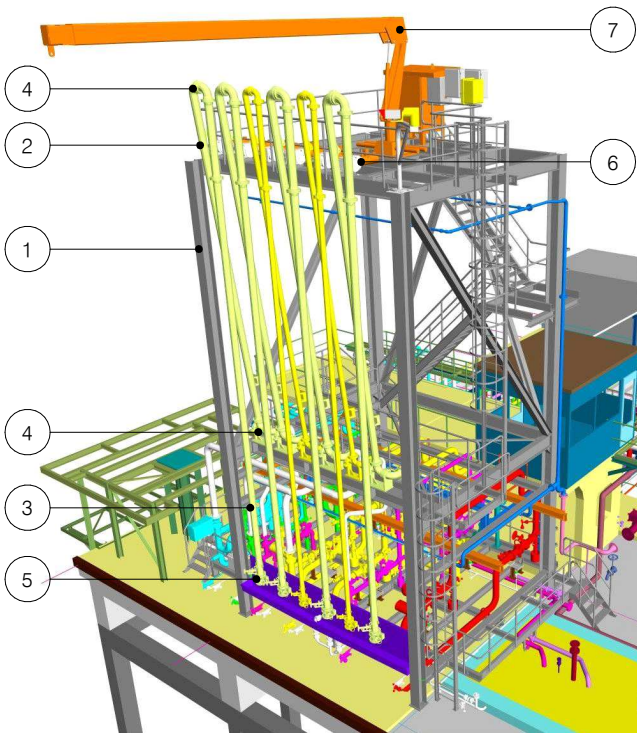


hose tower

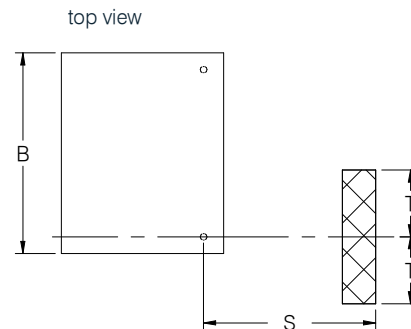
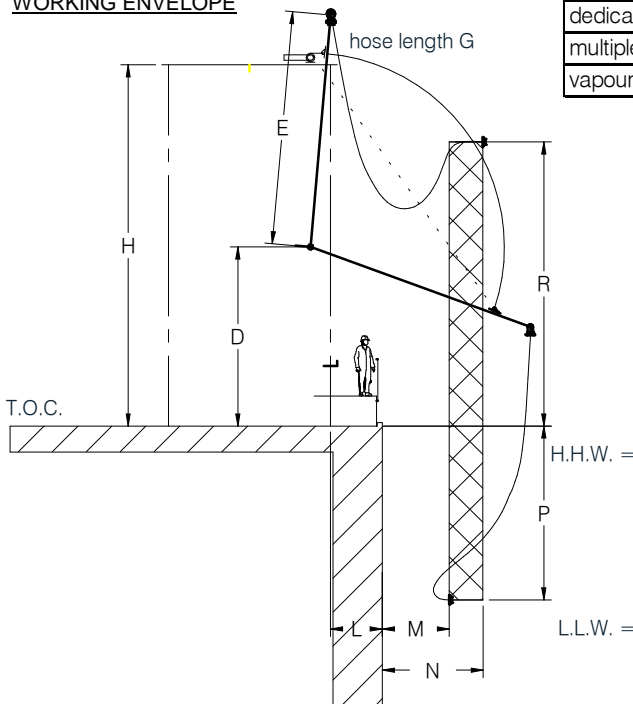


| ITEM           | SPECIFICATION  |
|----------------|--|
| dimensions     | DN80 (3"), DN100 (4"), DN150 (6"), DN200 (8")        |
| material arm   | stainless steel, steel, PTFE lined                   |
| material hose  | composite PTFE lined, rubber                         |
| connection     | flanged ANSI/DIN                                     |
| swivel joint   | 30-2000 (standard), 30-3620 (PTFE lined)             |
| seals          | PTFE, Viton, EPDM                                    |
| operation      | electric / hydraulic                                 |
| type operation | fixed control panel,<br>(radiografic) remote control |

| No. | NAME                      |
|-----|---------------------------|
| 1   | steel construction        |
| 2   | hose arm                  |
| 3   | hose                      |
| 4   | swivel joint              |
| 5   | connection piece          |
| 6   | winch                     |
| 7   | hydraulic telescope crane |

| FEATURES             |   |
|----------------------|---|
| compact construction | smaller jetty area compared to space required for same number of marine loading arms        |
| customized design    | adjustable to customers specifications with regard to number, length en diameter hose arms. |
| easy operation       | easy operation by means of a remote control   |
| dedicated hose arms  | one product group per hose arm  |
| multiple loading     | simultaneous loading of various prod. at the same time                                      |
| vapour return device | dedicated hose arm for vapour return  |

WORKING ENVELOPE



subject to technical modifications